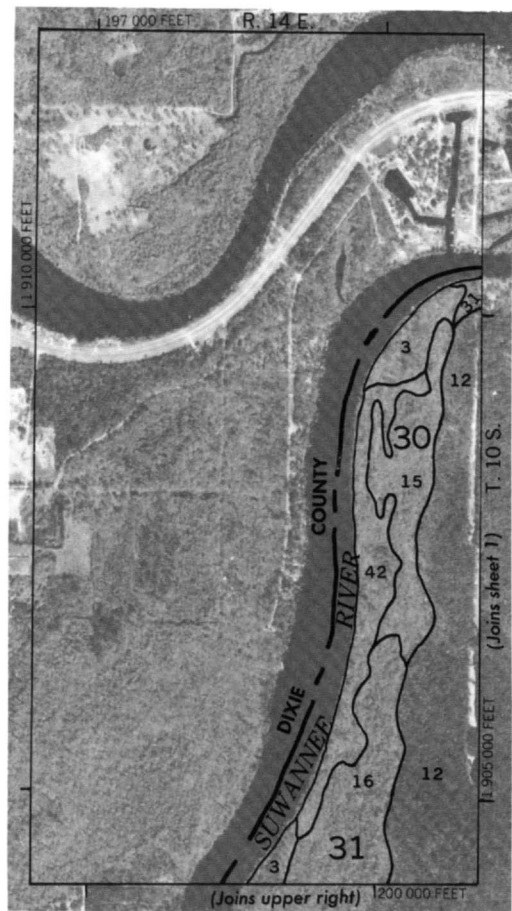




10000 Feet
3 Kilometers

Scale - 1:24 000



3000 AND 5000-FOOT GRID TICKS



11 900 000 FEET

175 000 FEET

11 910 000 FEET

11 970 000 FEET

R. 14 E.

DIXIE COUNTY

SUWANNEE RIVER

T. 10 S.

(Joins sheet 1)

11 905 000 FEET

1200 000 FEET

(Joins upper right)

R. 13 E. | R. 14 E.

DIXIE COUNTY

SUWANNEE RIVER

(Joins sheet 4)

11 890 000 FEET

1200 000 FEET

(Joins sheet 8)

DIXIE COUNTY

MANATEE SPRINGS STATE PARK