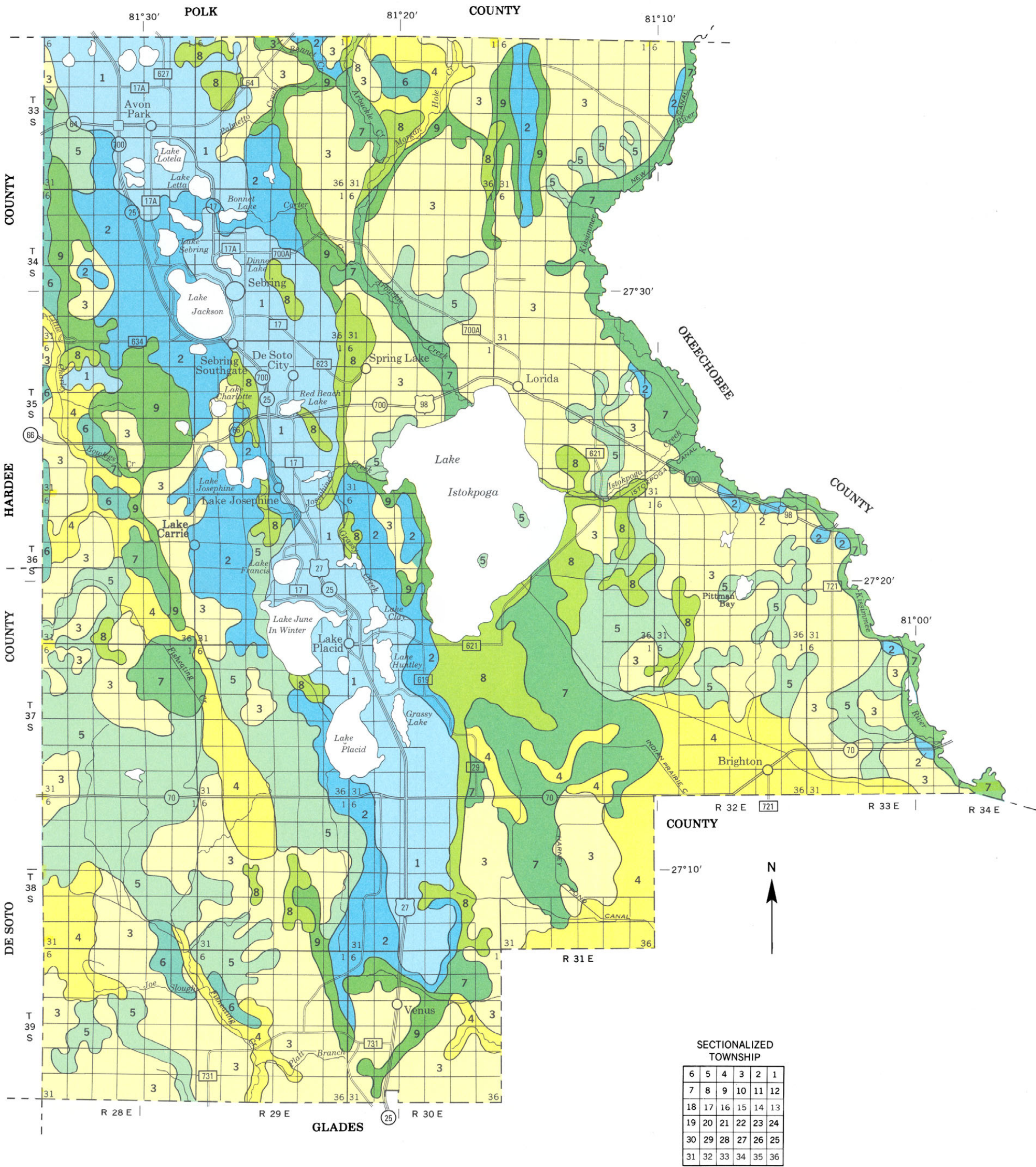


Each area outlined on this map consists of more than one kind of soil. The map is thus meant for general planning rather than a basis for decisions on the use of specific tracts.



LEGEND

SOILS OF THE UPLAND RIDGES

- 1 ASTATULA-PAOLA-TAVARES: Nearly level to rolling, excessively drained to moderately well drained, sandy soils
- 2 SATELLITE-ARCHBOLD-POMELLO: Nearly level or gently sloping, somewhat poorly drained or moderately well drained sandy soils; some have an organic-stained subsoil

SOILS OF THE FLATWOODS AND SLOUGHS

- 3 MYAKKA-IMMOKALEE-SMYRNA: Nearly level, poorly drained, sandy soils that have an organic-stained subsoil
- 4 FELDA-HICORIA-MALABAR: Nearly level, poorly drained or very poorly drained, sandy soils that are underlain by loamy material at a depth of 20 to more than 40 inches
- 5 BASINGER-VALKARIA-PLACID: Nearly level, poorly drained or very poorly drained, sandy soils
- 6 OLDSMAR-EAUGALLIE-POMONA: Nearly level, poorly drained, sandy soils that have an organic-stained subsoil underlain by loamy material

SOILS OF THE SWAMPS AND MARSHES

- 7 KALIGA-TEQUESTA-GATOR: Nearly level, very poorly drained soils that have an organic layer underlain by loamy material
- 8 SAMSULA-HONTOON-SANIBEL: Nearly level, very poorly drained soils; most are organic and have a sandy substratum; some have a thin, organic surface layer

SOILS OF THE CUTTHROAT SEEPS

- 9 BASINGER-ST. JOHNS-PLACID: Nearly level, poorly drained or very poorly drained, sandy soils; some have an organic-stained subsoil

UNITED STATES DEPARTMENT OF AGRICULTURE
SOIL CONSERVATION SERVICE
UNIVERSITY OF FLORIDA
INSTITUTE OF FOOD AND AGRICULTURAL SCIENCES
AGRICULTURAL EXPERIMENT STATIONS AND SOIL SCIENCE DEPARTMENT
FLORIDA DEPARTMENT OF AGRICULTURE AND CONSUMER SERVICES

GENERAL SOIL MAP
HIGHLANDS COUNTY, FLORIDA

COMPILED 1988

